

LEASE PROPERTIES

PROPERTY INFORMATION

- > Office / Medical / Flex
- > 4,000 sq. ft. total (adjacent space could be made available to increase to 5,600 sq. ft.)
- > \$10.50 to \$13.00 per sq. ft. with water included (lease “as is” or a TI budget is available for upfit).
- > Off Healy Drive behind Flow Chevrolet w/ easy access to both I-40's, Silas Creek Parkway & Stratford Rd.
- > Convenient, curb side parking with 59 parking spaces.
- > 6' double door allows a portion of the space to be used as “Flex” (assembly, storage or distribution).
- > Recent exterior updates.





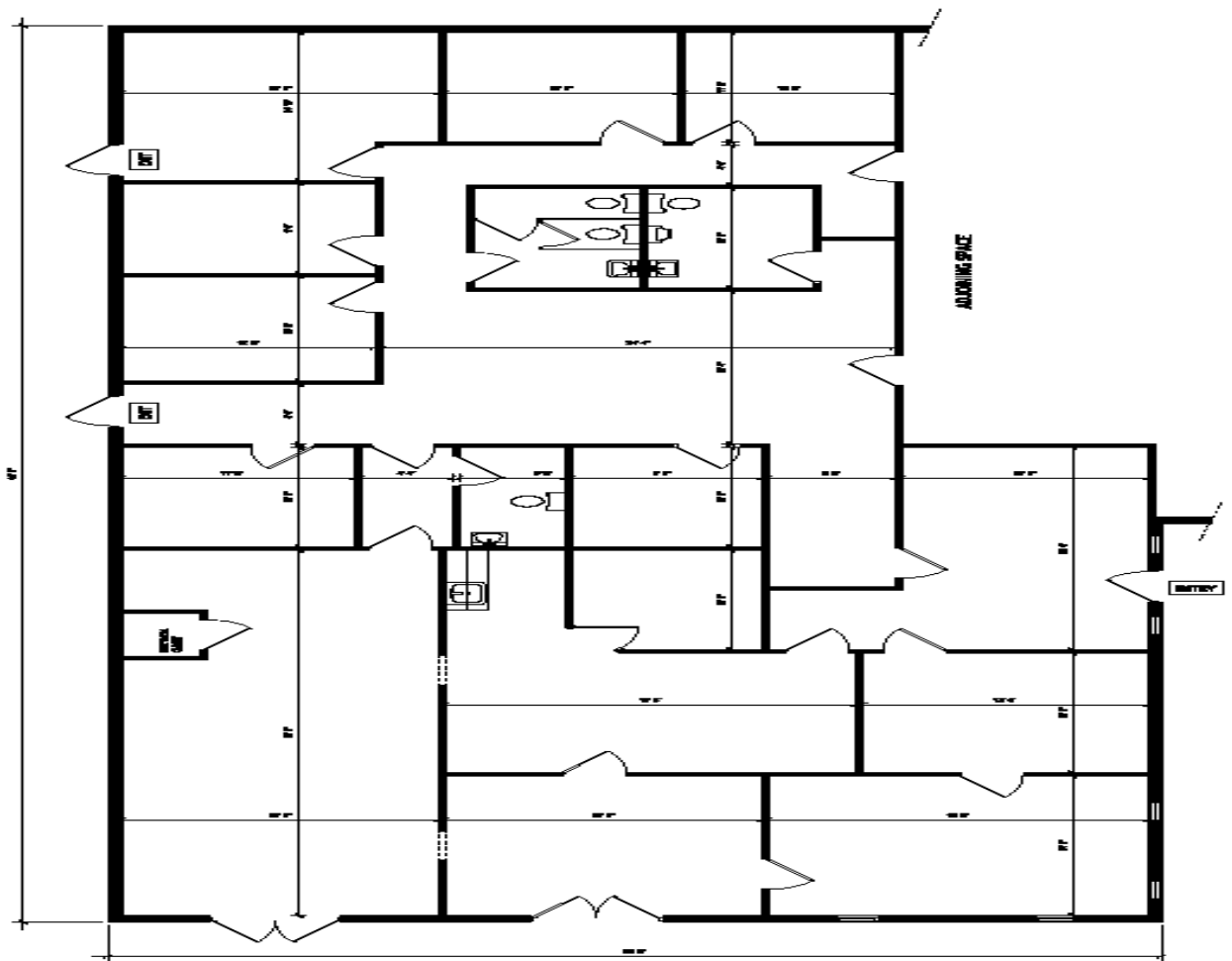
LEASE PROPERTIES

PROPERTY DETAILS

- > **Year Built** 1983
- > **County** Forsyth
- > **Location** [1411 Plaza West Road Winston-Salem, NC 27103](#)
- > **Space** 5,600 sq. ft. total available
(4,000 sq. ft. and 1,600 sq ft, possible)
10,000 total building sq. ft.
One-story structure
- > **Utilities** Water (included in rent)
- > **Parking** 60 parking space lot
- > **Comments** Convenient to both I-40 and Business I-40, Silas Creek Parkway and Stratford Road. Curb parking with a partially covered sidewalk for easy client access. Street marque allows for signage.

LEASE PROPERTIES

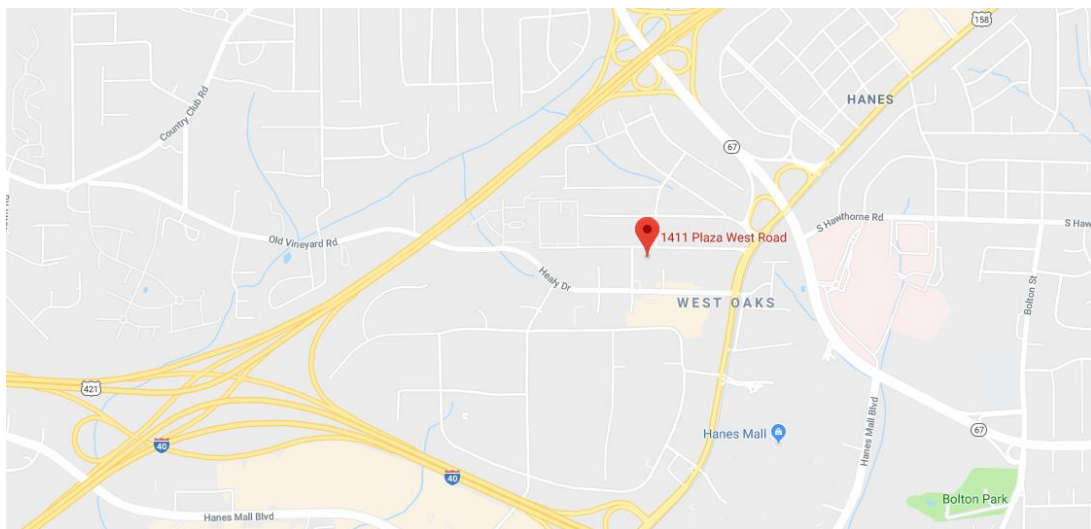
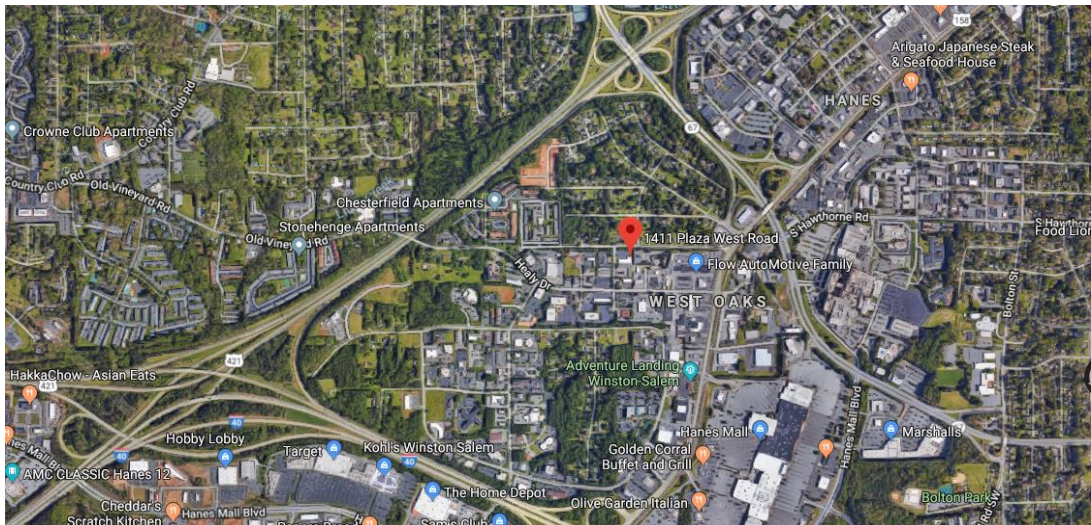
PROPERTY BLUEPRINT



1411 PLAZA WEST ROAD
SUITE D
3982 SQ. FT.

LEASE PROPERTIES

PROPERTY LOCATION





Lobby



Office



Office



Flex / Open Area