

LEASE PROPERTIES

PROPERTY INFORMATION

- > Office Space
- > 1,600 sq. ft. total (adjacent space could be made available to increase the area)
- > \$12.00 to \$14.00 per sq. ft. with water included (New bathrooms, lights and ceiling tiles. Floor plan to be customized).
- > Off Healy Drive behind Flow Chevrolet w/ easy access to both I-40's, Silas Creek Parkway & Stratford Rd.
- > Convenient, curb side parking with 59 parking spaces in the lot.
- > Recent exterior updates. .
- > Broker Protected.



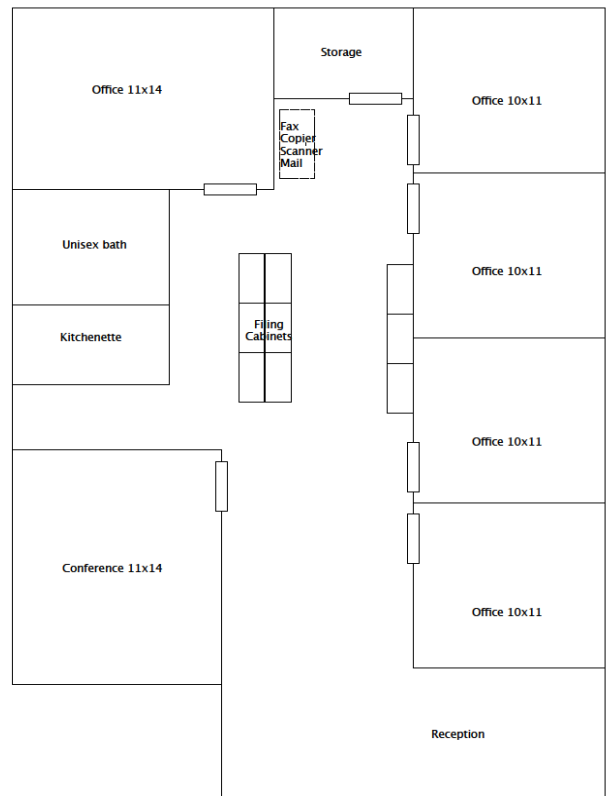
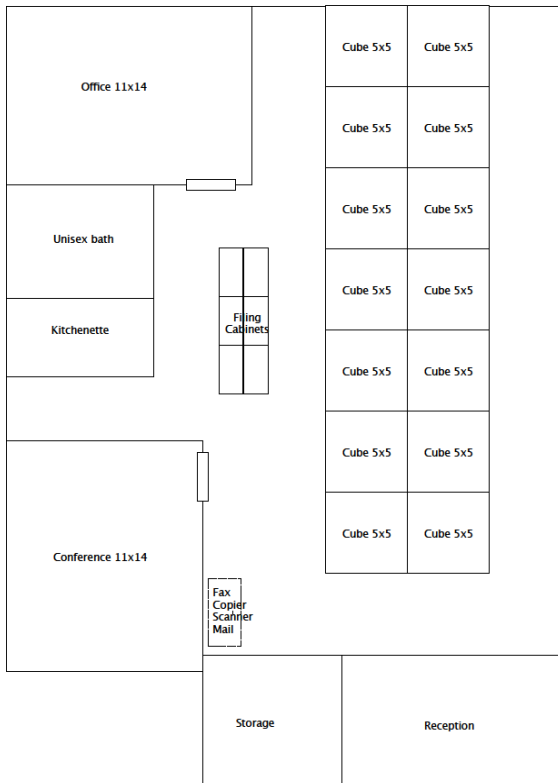
LEASE PROPERTIES

PROPERTY DETAILS

- > **Year Built** 1983
- > **County** Forsyth
- > **Location** [1411 Plaza West Road Winston-Salem, NC 27103](#)
- > **Space** 1,600 sq. ft. available
(additional 4,000 can be leased)
10,000 total building sq. ft.
One-story structure
- > **Utilities** Water (included in rent)
- > **Parking** 59 parking space lot
- > **Comments** Convenient to both I-40 and Business I-40, Silas Creek Parkway and Stratford Road. Curb parking with a partially covered sidewalk for easy client access. Street marque allows for signage.

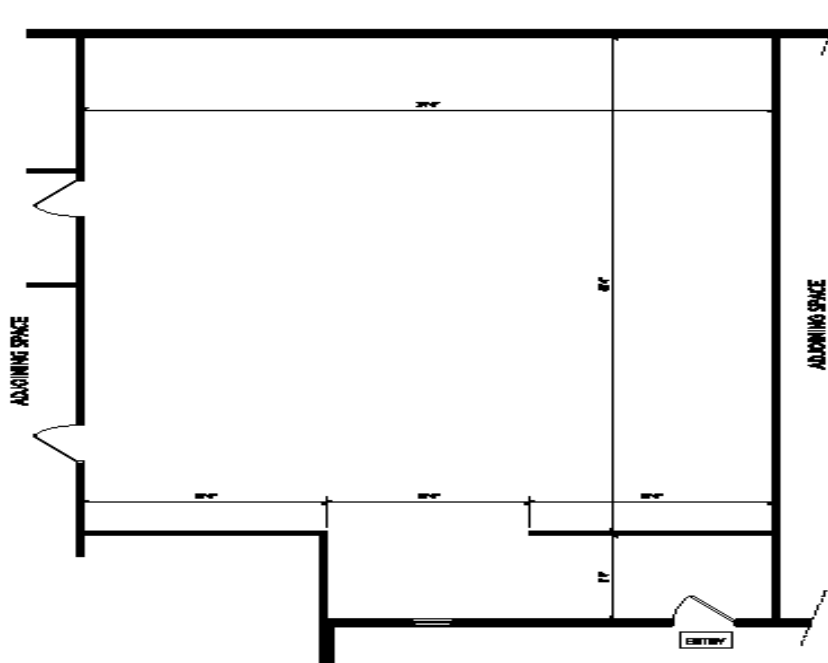
LEASE PROPERTIES

POSSIBLE FLOOR LAYOUTS



LEASE PROPERTIES

EXISTING OPEN FLOOR PLAN



1411 PLAZA WEST ROAD
SUITE C
1641 SQ FT

LEASE PROPERTIES

PROPERTY LOCATION

