

LEASE PROPERTIES

PROPERTY INFORMATION

- > 2,000 sq. ft. total
- > \$10.00 to \$13.00 per sq. ft. with water included
- > Off Healy Drive behind Flow Chevrolet w/ easy access to both I-40's, Silas Creek Parkway & Stratford Rd.
- > Convenient, curb side parking with a 60 space lot
- > Four window and two interior offices, full conference room and open space work area. Storage rooms, break room and two bathrooms.
- > Recent exterior updates to the building and to this unit.
- > Broker Protected



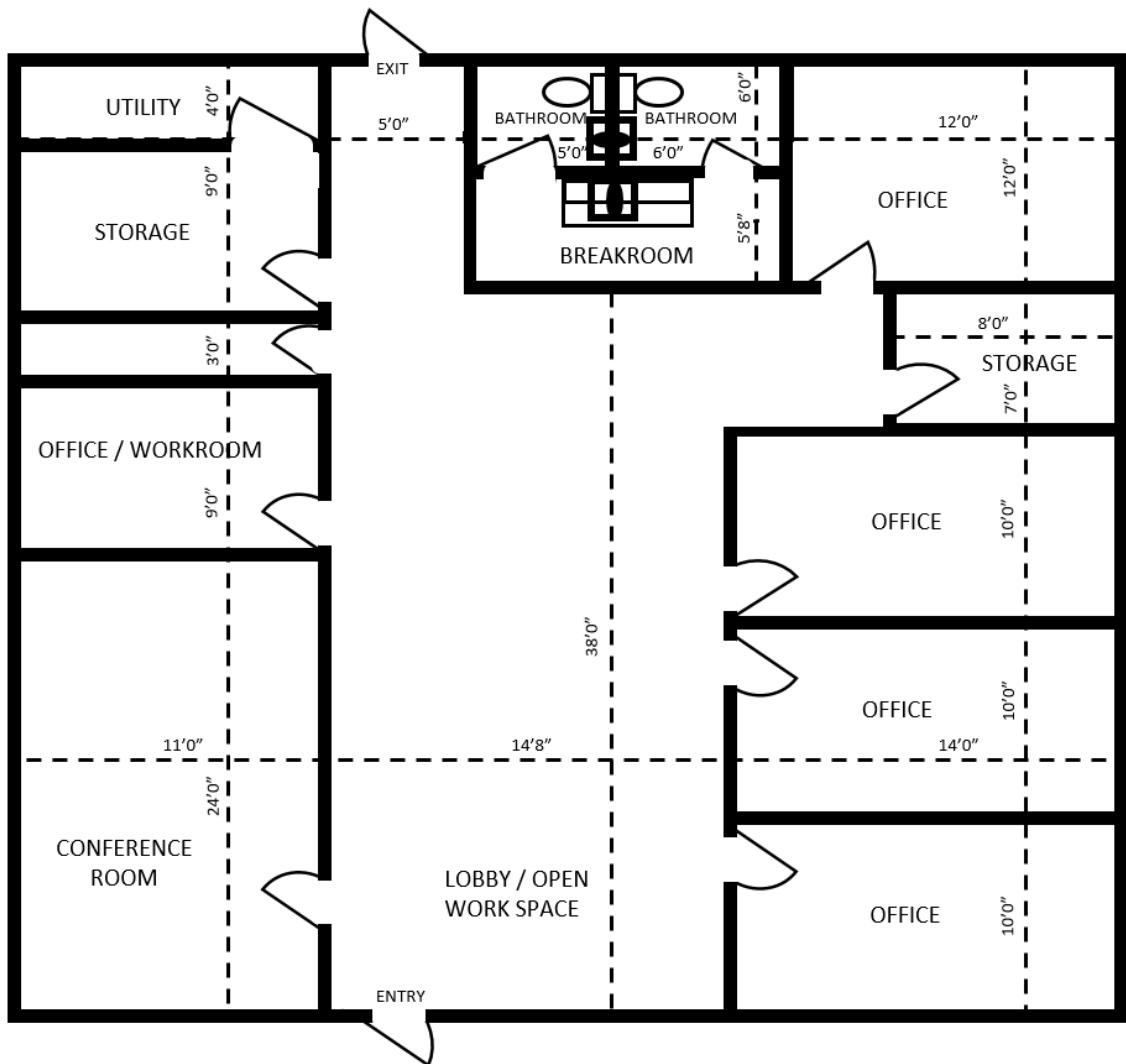
LEASE PROPERTIES

PROPERTY DETAILS

- > **Year Built** 1983
- > **County** Forsyth
- > **Location** [1411 Plaza West Road Winston-Salem, NC 27103](#)
- > **Space** 2,000 sq. ft. available
10,000 total building sq. ft.
One-story structure
- > **Utilities** Water (included in rent)
- > **Parking** 56 parking space lot
- > **Comments** Convenient to both I-40 and Business I-40, Silas Creek Parkway and Stratford Road. Curb parking with a partially covered sidewalk for easy client access. Street marquee allows for signage.

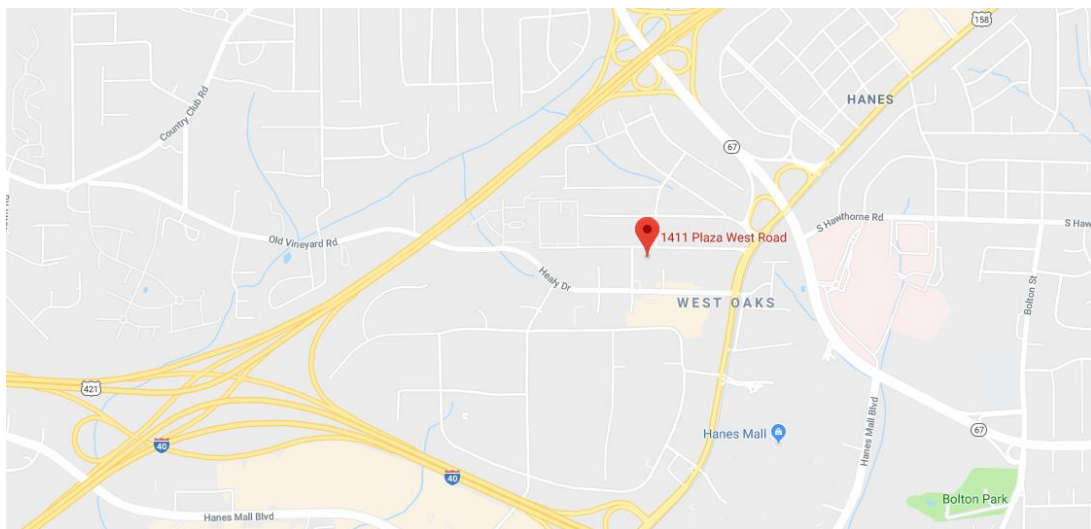
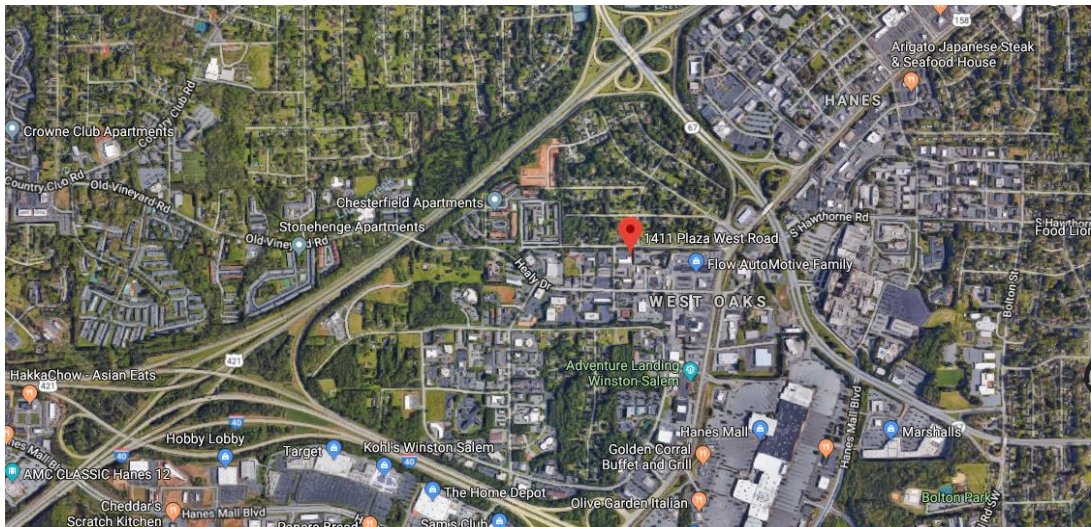
LEASE PROPERTIES

PROPERTY BLUEPRINT



LEASE PROPERTIES

PROPERTY LOCATION

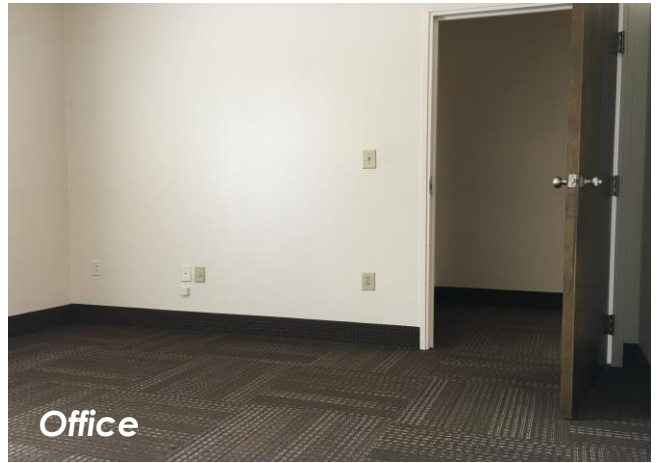




Lobby / Open Work Space



Office



Office



Conference Room